



---

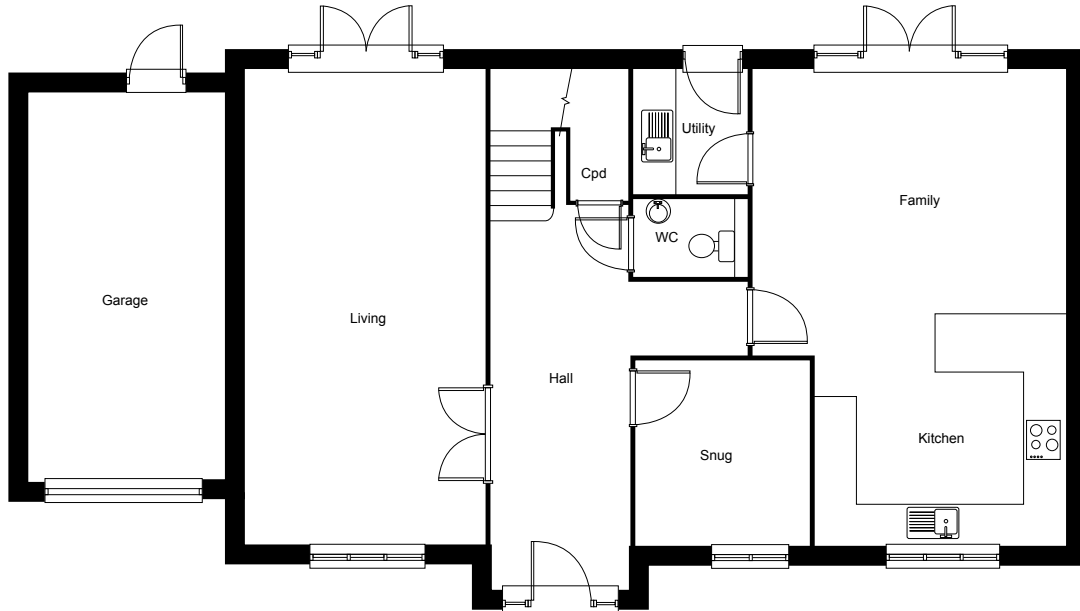
PLOT 4  
INGLEWOOD  
*2034 square feet*

---

	Metres
Entrance Hall	
Family/Kitchen	7.35 x 4.82
Living Room	7.35 x 3.73
Snug	2.85 x 2.70
Utility Room	
Cloakroom	
Master Bedroom	4.68 x 3.15
En Suite	
Bedroom Two	3.62 x 3.73
Bedroom Three	3.62 x 2.88
Bedroom Four	3.60 x 2.67 (excluding dormer)
Study	2.60 x 3.73

This attractive 4 bedroom detached house offers open plan living space, good size bedrooms and a garage.

GROUND FLOOR



FIRST FLOOR

